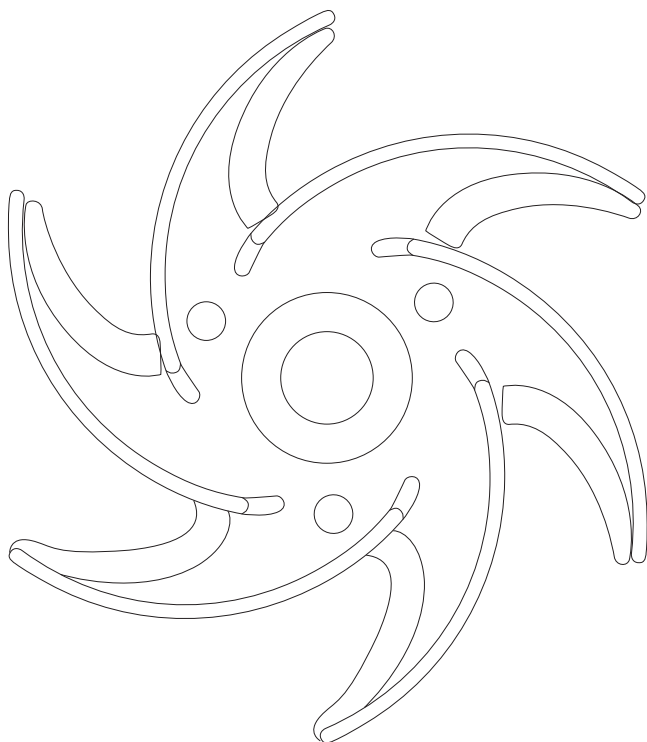


# JEC - Always a Step Ahead

JP SERIES CENTRIFUGAL PUMPS



**JEC**  
P U M P S

A VERDER COMPANY

# 3IP

High Pride  
Higher Performance  
Highest Quality



JEC Ltd. specialise in the field of sanitary pumps.

JEC was established in 1990 and started producing sanitary pumps utilising precision cast and pressed parts for the first time in Korea. Since then JEC has been successfully supplying to the process industries centrifugal, rotary, twin screw and self-priming pumps, as well as blenders. JEC pumps are now renowned for reliability both for general duties and special application. JEC's success is built upon high quality manufacture and customer satisfaction. Our policy is one of long term vendor partnerships.

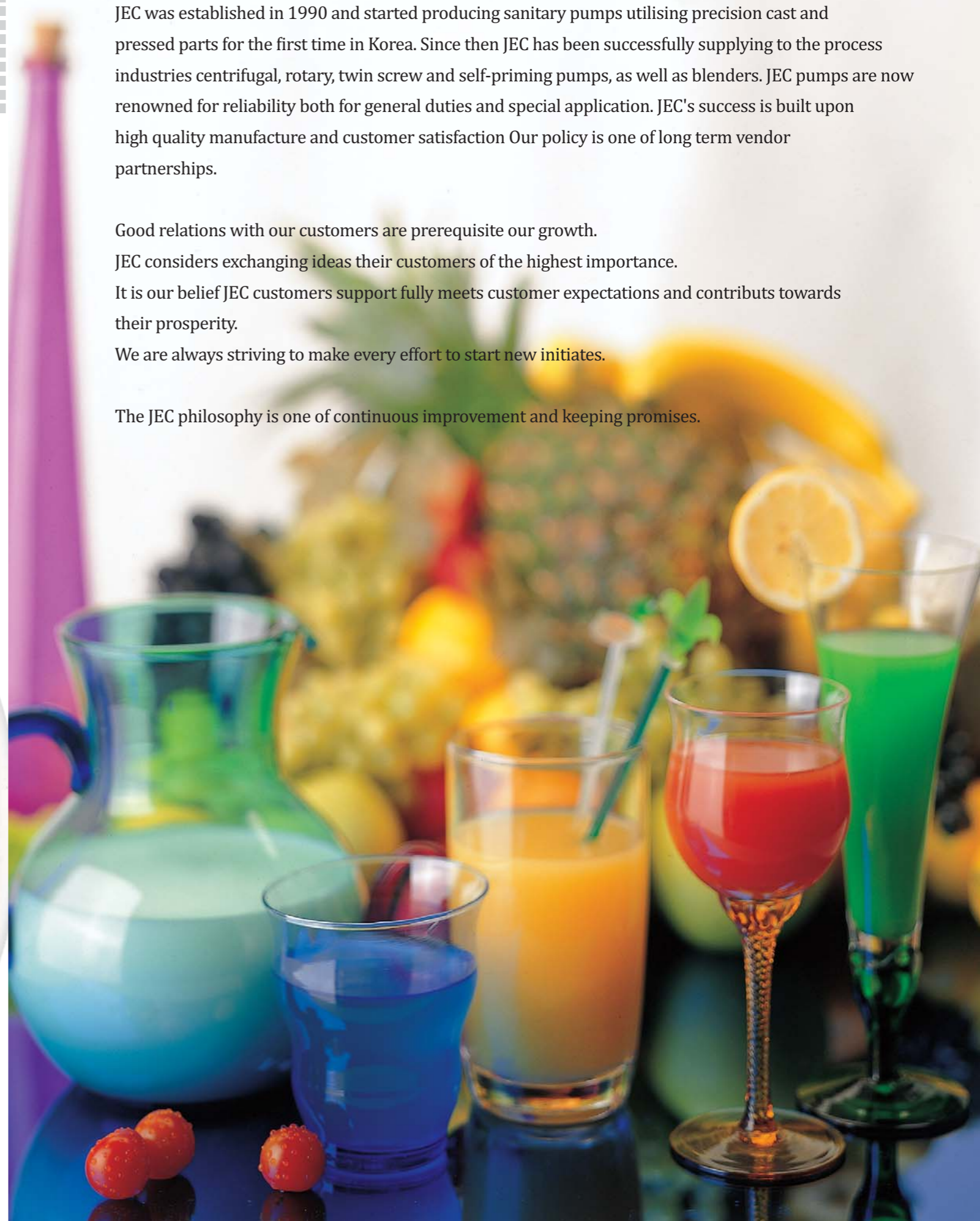
Good relations with our customers are prerequisite our growth.

JEC considers exchanging ideas their customers of the highest importance.

It is our belief JEC customers support fully meets customer expectations and contributes towards their prosperity.

We are always striving to make every effort to start new initiatives.

The JEC philosophy is one of continuous improvement and keeping promises.



## Our pride is created by high quality!

In all sectors of the beverage and food processing industries, the JEC JP Series pumps have proven successful by absolute reliability, low energy consumption, perfect CIP clean ability and low noise level. special feature of the JEC pump is high efficiency which gives low energy consumption. the basis for this is the unique spiral-shaped casing and the double curved impeller. the design reduces friction and turbulence and gives a better suction capacity (low NPSH) at the same time as the pumped product is handled very gently.

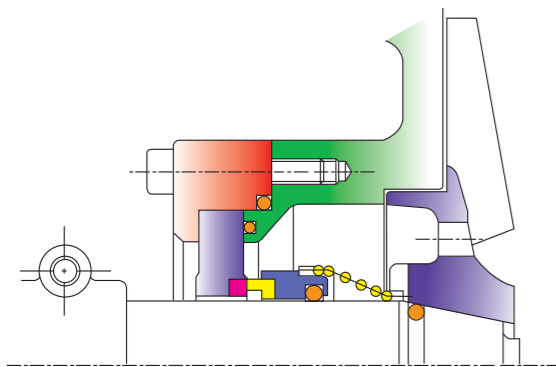


# JP series Centrifugal Pumps

JEC - Always a Step Ahead

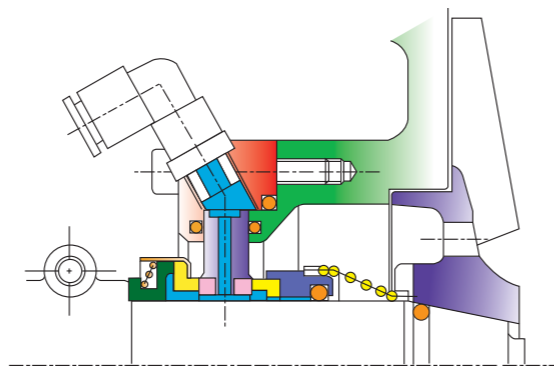
- The JEC JP Series pumps are ideal for hygienic application in field of dairy, food, beverage, pharmaceutical and other industries where acid-proof steel is resistant to the liquids to be pumped.
- The pumps come from long-term developed activities and experiences in the production of pumps combined with detailed knowledge of products and their processing
- All parts in contact with the liquid-casing, impeller and shaft-are made of 316L stainless steel.
- Designed for either CIP or manual cleaning
- Only one size of shaft seal is required for all JP series (except 205 series), so keeping a few parts in stock is simple and inexpensive
- Further a single seal can be easily changed to double seal in minutes with just a few extra parts.
- Packing of EPDM rubber and others are available as required.
- The pumps can deliver capacities up to 100m<sup>3</sup>/hr and head up to 80m.

## MECHANICAL SEAL



Standard Mechanical Seal

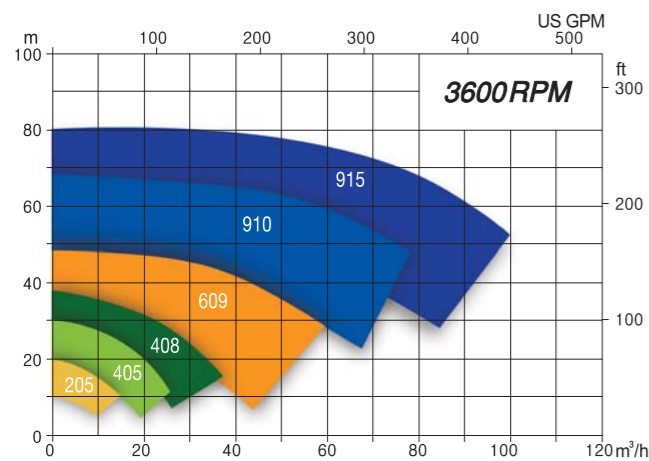
- **Face materials**  
SiC/Carbon(STD), Optional - SiC/SiC



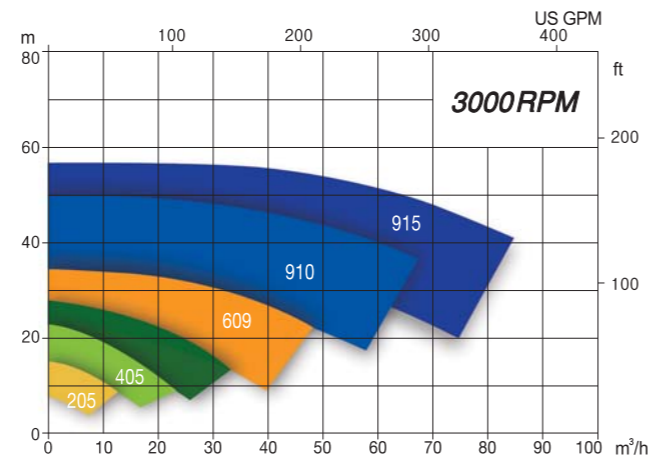
Flushed Mechanical Seal

- **Elastomers**  
EPDM(STD), Optional - FPM, Perfluoro etc.

## PERFORMANCE COURVES



Performance data refer to water at 20°C, Permissible tolerance ± 5%



*“The higher the precision  
the longer the span of product life”*



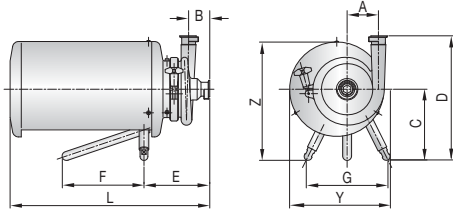
Our pride is created by high quality!

JEC Sanitary Pumps

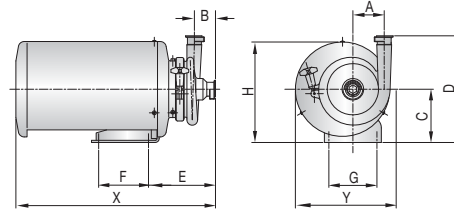


*"The reliable choice for your process"*

■ STANDARD VERSION



■ BASE MOUNTING VERSION



■ STANDARD VERSION

Model NO.	MOTOR			CONNECTION		Dimension											WEIGHT KG	VOLUME CBM
	RPM	KW	FRM NO.	SUCT.	DISCH.	A	B	C	D	E	F	G	H	L	Y			
JP405-236	3600	1,5	90L	51	38	88	60	200	350	185	230	230	335	560	290	38	0,05	
JP405-336	3600	2,2	90L	51	38	88	60	200	350	185	230	230	335	560	290	40	0,05	
JP408-536	3600	3,7	112M	51	38	88	60	220	370	195	260	260	380	620	325	56	0,08	
JP609-736	3600	5,5	132S	63	51	102	58	260	450	220	315	300	454	750	390	90	0,13	
JP609-1036	3600	7,5	132M	63	51	102	58	260	450	220	315	300	454	750	390	96	0,13	
JP910-218	1800	1,5	90L	63	51	118	65	200	370	190	230	230	350	560	290	48	0,06	
JP910-318	1800	2,2	90L	63	51	118	65	200	370	190	230	230	350	560	290	50	0,06	
JP915-518	1800	3,7	112M	63	51	118	65	220	390	190	230	230	350	560	290	66	0,06	
JP905-1030	3000	7,5	132M	63	63	118	69	260	450	220	230	300	454	770	390	98	0,15	

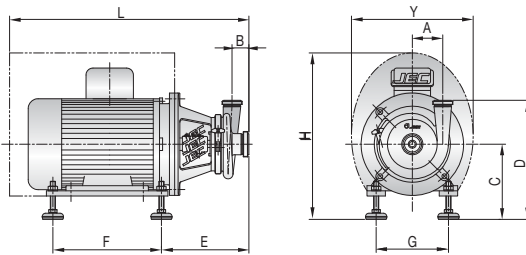


■ BASE MOUNTING VERSION

Model NO.	MOTOR			CONNECTION		Dimension											WEIGHT KG	VOLUME CBM
	RPM	KW	FRM NO.	SUCT.	DISCH.	A	B	C	D	E	F	G	H	L	Y			
JP405-236	3600	1,5	90L	51	38	88	60	150	300	220	145	135	285	560	290	38	0,05	
JP405-336	3600	2,2	90L	51	38	88	60	150	300	220	145	135	285	560	290	40	0,05	
JP408-536	3600	3,7	112M	51	38	88	60	187	340	230	195	170	340	620	325	56	0,07	
JP609-736	3600	5,5	132S	63	51	102	58	220	370	260	215	190	415	750	390	90	0,12	
JP609-1036	3600	7,5	132M	63	51	102	58	220	370	260	215	190	415	750	390	96	0,12	
JP910-218	1800	1,5	90L	63	51	118	65	150	320	190	145	135	285	560	290	48	0,05	
JP910-318	1800	2,2	90L	63	51	118	65	150	320	190	145	135	285	560	290	50	0,05	
JP915-518	1800	3,7	112M	63	51	118	65	150	320	190	145	135	285	560	290	66	0,05	
JP905-1030	3000	7,5	132M	63	63	118	69	220	399	281	215	190	454	770	390	98	0,15	

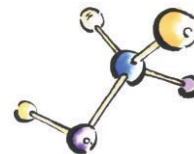


■ FRAME MOUNTING VERSION



■ FRAME MOUNTING VERSION

Model NO.	MOTOR			CONNECTION		Dimension											WEIGHT KG	VOLUME CBM
	RPM	KW	FRM NO.	SUCT.	DISCH.	A	B	C	D	E	F	G	H	L	Y			
JP910-F1536	3600	11	160M	76	63	118	65	290	460	233	464	254	594	840	415	163	0,2	
JP910-F2036	3600	15	160M	76	63	118	65	290	460	233	464	254	594	840	415	170	0,2	
JP910-F2536	3600	18,5	160L	76	63	118	65	290	460	233	464	254	594	880	415	185	0,2	
JP915-F3036	3600	22	180M	76	63	118	65	315	480	241	479	279	662	900	485	235	0,2	
JP915-F4036	3600	30	200L	76	63	118	65	335	500	241	495	318	670	920	520	295	0,2	



A VERDER COMPANY

15-26, Beodeul-ro 1362, Paltan-myun, Hwaseong-si, Gyeonggi-do, 18578, Rep. of Korea  
Tel:+82-31-355-0316, Fax:+82-31-355-0319, www.jecpump.com, E-mail:jec@jecpump.com